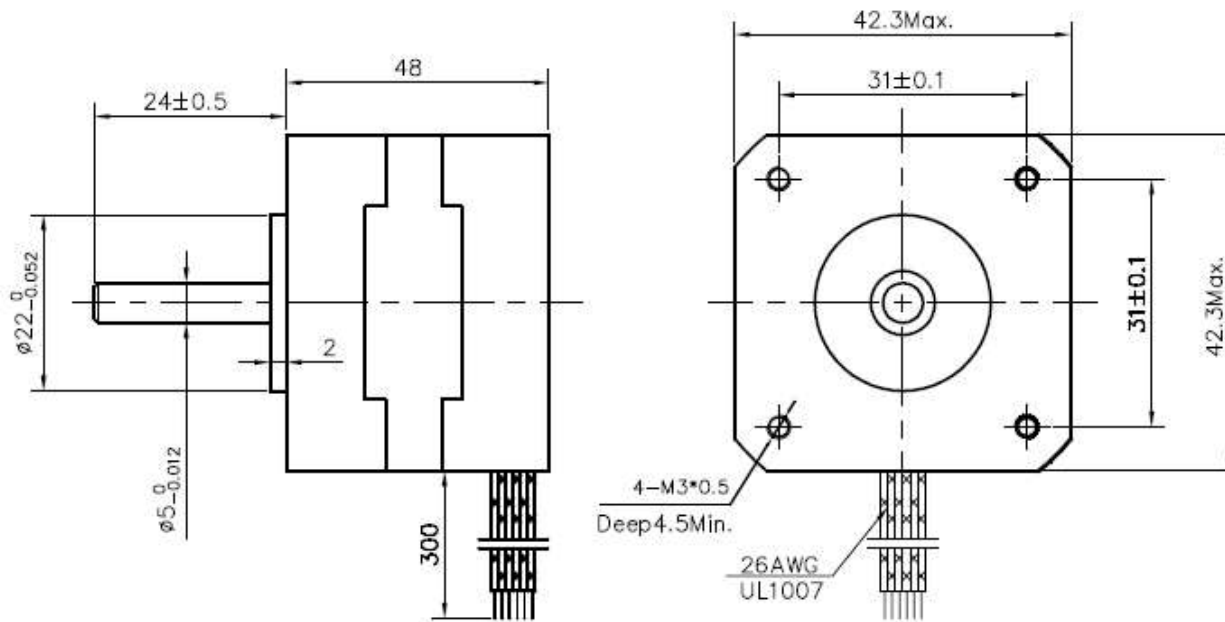
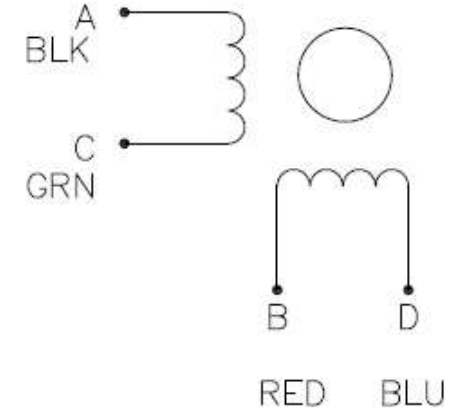


Dimension:
Unit=mm



Wiring Diagram:



Specifications:

Phase	2	
Step Angle	1.8	deg.
Voltage	2.8	V
Current	1.68	A
Resistance	1.65	Ω
Inductance	2.3	mH
Holding Torque	5.0	kg.cm
Insulation Class	B	
Mass	0.34	kg